



838TE

BATTERY TYPE	LFP
RATED STORAGE ENERGY	193 kWh
OPERATING WEIGHT	14,600 kg
STANDARD BUCKET SIZE	1.9 m ³
STANDARD BREAKOUT FORCE	115 kN
STANDARD DUMP CLEARANCE	2,804 mm



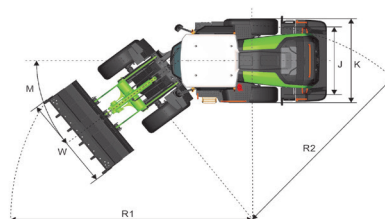
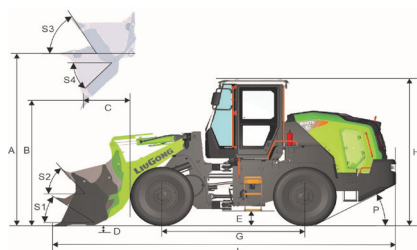
B A T T E R Y E L E C T R I C V E H I C L E

TOUGH WORLD. TOUGH EQUIPMENT.

838TE SPECIFICATIONS >>>

POWER BATTERY	
Battery Type	LFP
Rated Storage Energy	193 kWh
Nominal Voltage	634 V
System Voltage	DC24V
BMS Protection Level	IP67
Cooling Type	Intelligent temperature control, liquid cooling
Recommended Charger	120 ~ 240 kW
Charging Time (160 kW Charging Power)	≤ 70 min
DRIVE MOTOR	
Peak Power	120 kW
Protection Level	IP67
Ambient Temperature	- 40 ~ 85°C
Cooling Type	Intelligent temperature control, liquid cooling
Altitude	≤ 4,500 m
HYDRAULIC MOTOR	
Peak Power	95 kW
Protection Level	IP67
Ambient Temperature	- 40 ~ 85°C
Cooling Type	Intelligent temperature control, liquid cooling
Altitude	≤ 4,500 m
TRANSMISSION	
Manufacturer	LiuGong
Number of Speeds, fwd / rev	2 / 1
Maximum Travel Speed, fwd	40 km/h
Maximum Travel Speed, rev	16.7 km/h
Transmission Type	Fixed-axis electronic control shift
AXLES	
Type	LiuGong wet axle
Axle Oscillation	± 9°
Tire Size	20.5R25 ★/L-3
WORKING HYDRAULICS	
System	Variable single pump
Operation	Single electric-control joystick
Work Pump	Piston pump
Work Pressure	26 MPa

STEERING HYDRAULICS	
System	Large displacement steering
Steering Pump	Piston pump
Steering Relief Pressure	18 MPa
BRAKES	
Service Brake Type	Full hydraulic braking
Service Brake Actuation	Hydraulic wet brake
Parking Brake Type	Drum
Parking Brake Actuation	Electro-hydraulic control
LOADER ARM PERFORMANCE	
Operating Weight	14,600 kg
Bucket Capacity	1.9 m³
Tipping Load - Straight	10,858 kg
Tipping Load - Full Turn	7,900 kg
Raise Time	4.8 s
Dump Time	1.1 s
Float Down Time	3.1 s
Fastest Total Cycle Time	9 s
Bucket Breakout Force	115 kN
A Maximum Hinge Pin Height	3,870 mm
B Dump Clearance at Full Height Discharge	2,804 mm
C Dump Reach at Full Height Discharge	1,154 mm
D Maximum Digging Depth, Bucket Level	83 mm
S ₁ Bucket Rollback at Ground Level	40°
S ₂ Bucket Rollback at Carry	48°
S ₃ Bucket Rollback at Maximum Height	54.5°
S ₄ Maximum Dump Angle at Full Height	45°
DIMENSIONS	
E Ground Clearance	378 mm
G Wheelbase	3,020 mm
H Cab Height	3,350 mm
J Wheel Tread	1,950 mm
K Width Over Tires	2,470 mm
L Length with Bucket Down	7,393 mm
M Turn Angle, Either Side	40°
P Rear Angle of Departure	28°
R ₁ Turning Radius, Bucket Carry	6,072 mm
R ₂ Turning Radius, Outside of Tire	5,583 mm
W Width Over Bucket	2,470 mm
SERVICE CAPACITIES	
Anti-freeze	55 L
Hydraulic Reservoir	101 L
Axle, Front / Rear	33/38 L
Transmission	16.5 L



Guangxi Liugong Machinery Co., Ltd.

No. 1 Liutai Road, Liuzhou, Guangxi 545007, PR China
T: +86 772 3886124 E: overseas@liugong.com

www.liugong.com

Specifications and designs are subject to change without notice. Machines shown may include optional equipment. LiuGong standard and optional equipment may vary from region to region. Please consult your LiuGong dealer for information specific to your area.

07/2025 Designed by LiuGong
Replace the previous versions of 07/2025